

Electric Water Heaters

2018

THERMEX TODAY

Most people around the world, choosing sophisticated home appliances, prefer to deal with professionals. The real world-class professionals are units. One of the world's leading specialized manufacturers of water heaters is Thermex corporation. Since its foundation, for almost 70 years, the company has remained to be faithful to its specialization - **the production of water heating equipment** and has achieved in this field the highest skill.

Today we work in the markets of 60 different countries located in three continents. Our production facilities are located in Russia, China and other countries. Corporation's Business units are in many countries of the world and in each of them we not only realize certain types of products, but We organize the unified world technological chain:

- Scientific and technical research and new products development;
- work with suppliers of raw materials and components;
- full cycle of production, from processing raw materials to testing finished products;
- logistics complex: transportation, storage, delivery to customers or immediately to the consumer;
- professional installation, warranty and after-sales services;

ALL THIS IS THE WORK OF THE CORPORATION!

Specialization - huge power!

International corporation of heating equipment to the benefit of many generations.





WE BELIEVE

To create good conditions in those areas where people live, work and rest. We commit to help a life be more comfortable by producing advanced, innovative and reliable products in order to meet the people's requirements of wellness. We are working to bring to your homes a reliable, effective and environmental friendly source of hot water.



MADE TO LAST

«Made to last» concept of Thermex since more than 30 Years, It means reliability. With the purpose of creating the most reliable appliances, Thermex has built a unique Robo-Factory. Fully automated production guarantees ever high quality and reliable Thermex water heaters.

HISTORY & ACHIEVEMENTS

- 1949** The beginning of the Thermex chronicles.
- 1995** Reach 1 000 000 pcs./year production of enamel type electric water heaters.
- 2007** Launch of automated full-cycle production facility.
- 2010** Start of production water heaters with stainless steel inner tank.
- 2016** Reach 2 000 000 pcs./year of water heaters production.
- 2017** Open new regions for Thermex's expansion: Italy, China, Turkey.

QUALITY AND RELIABILITY

90%

The automation degree of technological processes

60000 m²

Production and warehouse area

90 branches

The widest distributional network



QUALITY IS THE KEY COMPETENCE

We pay a lot of attention to the quality of the goods we produce. We are sure that Manufacturer can only get success by supporting high quality level. Only best components and raw materials are used linked with skilled and scientific procedures to comply to our quality standards.

- Quality control at every stage of the production process
- R&D laboratory and Quality laboratory for testing innovation and actual operating conditions
- Computerized quality control
- Long-term research programs

MODERN PRODUCTION FACILITIES

Many water heating industry consultants with expertise in Water Heaters admit that **Heating Equipment production site operated by Thermex Corporation** is so far one of the most technically advanced and high-tech industries in the world. A group of leading experts that includes the best engineers from Italy, Switzerland, Germany and Russia has been involved in this project realization.

The total production area is 60 000 m². The turnout is more than 2 million water heaters per year. Today it is one of the largest factory in terms of water heaters production output in Europe. The automation degree of technological processes is more than 90%. The production rate is as follows: every 15 seconds a new water heater comes off the assembly line.

INNOVATIONS

As a specialized manufacturer of water heaters, Thermex Corporation has created its own scientific laboratories and engineering offices. All activities on study, development and implementation of innovative technologies are carried out there.

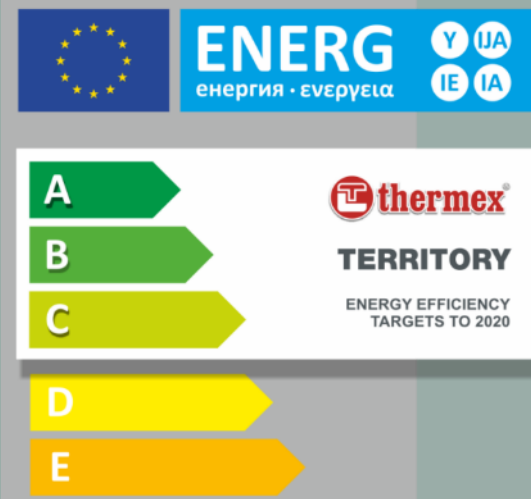
The result of long-term research programs is associated with a number of unique technologies developed and patented by Thermex Corporation for production reliable, user friendly and energy efficient water heater appliances.



ERP READY

ENERGY EFFICIENCY

ErP 2017 READY
APPLIES TO EUROPEAN DIRECTIVE
FOR ENERGY RELATED PRODUCTS



ERP DIRECTIVE

The ErP (Energy-related Products) Directive is due to be implemented in 2015. It consists of new regulations to help the EU achieve its 20/20/20 target to reduce energy use by 20% and increase the share of renewable energies by 20% to 2020.

On September 2017, new EU regulations impacting heating and hot water appliances will come into force. They specify minimum energy efficiency and emissions standards for products and systems. After their introduction non-compliant appliances and systems will be progressively phased out.

IMPROVING THE EFFICIENCY

Today, as a professional water heaters manufacturer, Thermex must meet the challenge of the more strict requirements of the ErP Directive.

As an innovative company we understand the importance of improving the energy efficiency in energy-related products for the customers and for global environment. We support the ErP initiatives of the EU and believe that it would help to structure the market of electric water heaters in Europe.

PRIORITIES FOR THERMEX

Thermex systemic task is associated with development of competitive products with high energy efficiency performance. Our aim is to produce such products that would help to decrease costs of the household being spent for the comfort of having hot water.

The goal worked upon by the corporation engineers is to produce products reducing end-users expenses for home comfort coming with hot water. The desire to improve the quality of the customers life with simultaneous reduction of their utility costs is the main idea of Thermex products.

UNDERSTANDING ErP LABEL

The ErP (Energy related Products) European policy consists of two directives: ecodesign and energy labelling. It aims to improve the energy efficiency of water heating equipment and other appliances sold in the European Union in order to help to protect the environment.

Ecodesign: sets down minimum energy performance values to be achieved thanks to required investment in appliances.

Energy labelling: encourages customers to purchase the most effective home products by highlighting their energy classes.

Each next step of the ErP regulation from 2013 to 2020 is equivalent to more stringent requirements and the promotion of the most efficient products - revision of minimal performance requirements and revision of label with new classes.

Thermex water heaters series launched since 2015 were already identified with an easily visible energy labels.

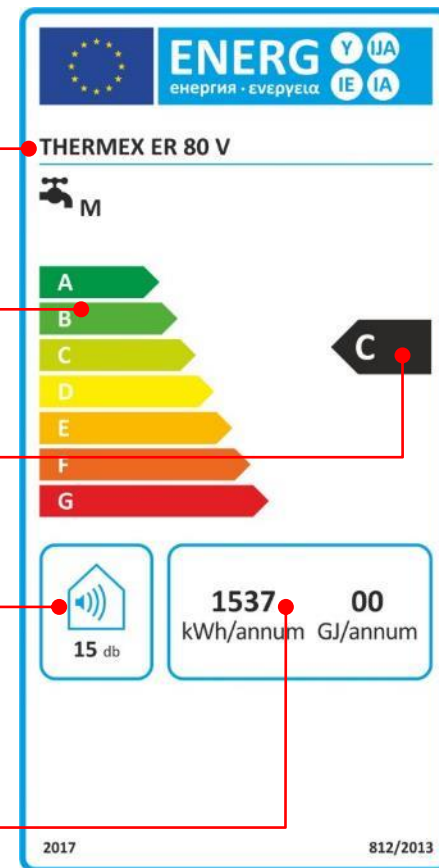
Supplier's name or trademark and model identifier

Heating efficiency A-G scale

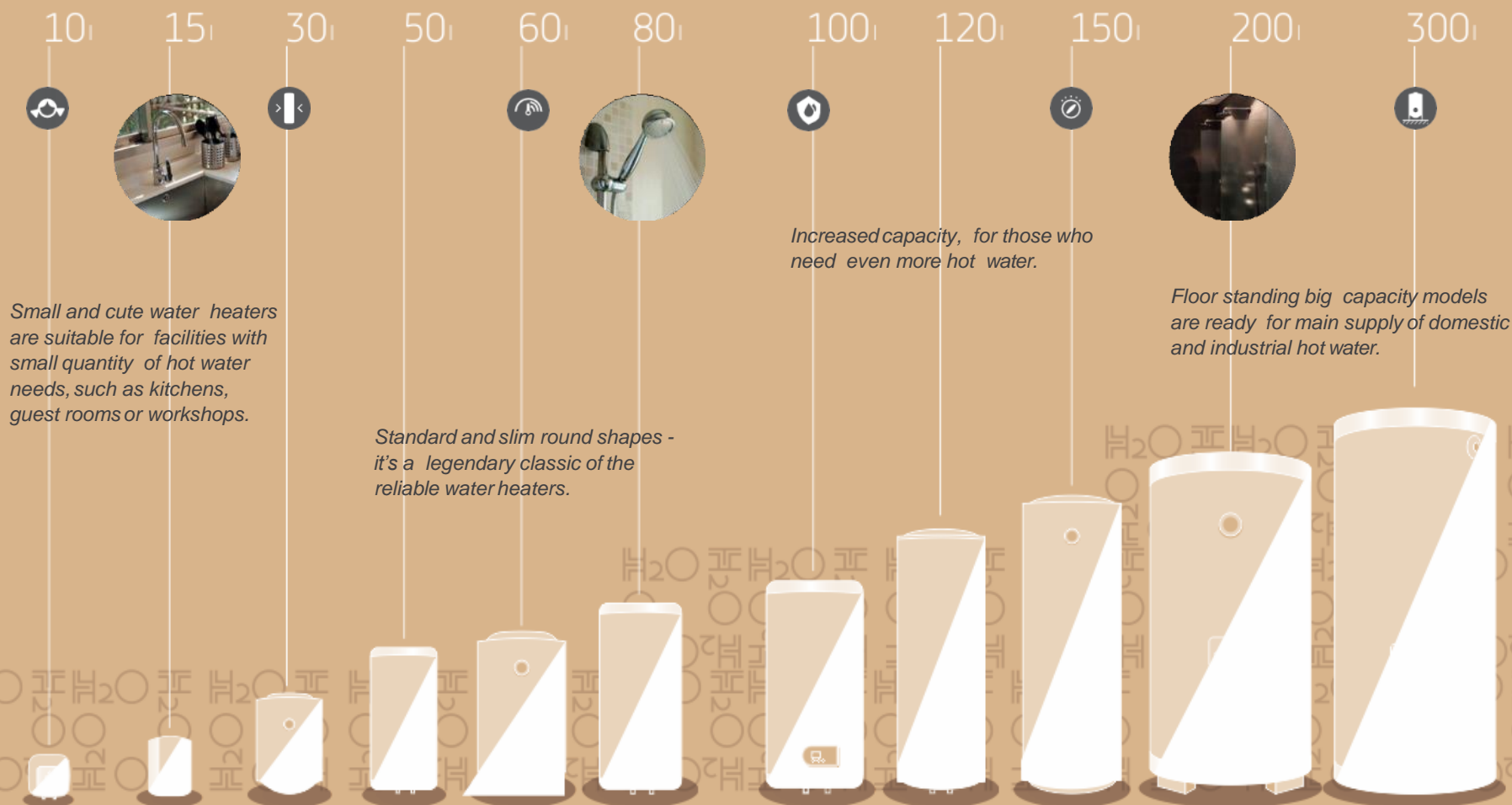
Water heating energy efficiency class

Sound power level, indoors

Annual energy consumption in kWh/annum or GJ/annum



SUITABLE FOR EVERYONE, PLACES TO EVERYWHERE



ICONS GUIDE

We strive to explain most clearly the values and advantages of Thermex water heaters. The following icons will tell you about the features of our products.



Special Bio-glasslined treatment of inner tank provides outstanding antibacterial effect and guarantee reliable corrosion protection.



Inner tanks of water heaters are made of special stainless steel by unique technology with corrosion protection of the joints.



STEEL OUTER CASING



MECHANICAL CONTROL



FLAT SHAPE MODELS



FAST HEATING MODE



PROTECTION ANODE



DRY HEATING ELEMENT



SLIM MODELS



CHILD PROTECTION



UNIVERSAL MODEL,
FOR VERTICAL OR
HORIZONTAL MOUNT



HEAT LOSS PROOF



FLOOR STANDING MODEL



3, 5, 7 YEARS
INNER TANK WARRANTY

BIO TECHNOLOGIES

The international fame of Thermex is achieved by its legendary water heaters series with Bio-glasslined coating of inner tank which is recognized as the most durable and resistant to corrosion and the effects of thermal and hydraulic shocks. Thermex is the absolute authority in the production of reliable and affordable water heaters and proudly proves that even low-cost models can work for many years, if it is Thermex water heaters.



Bio-glasslined

Is a unique patented coating of inner tank with the highest anti-corrosion protection with environment attention. It has much greater durability and elasticity than normal enamel coating, and successfully withstands to thermal and hydro shocks. Bio-glasslined much longer protects the tank from corrosion which is a major cause for water heater's failure.



Cold Rolled Steel

Only the highest quality cold rolled steel is used for inner tanks of Thermex BIO series. This steel is much more durable and plastic than the hot rolled steel which most of the world famous brands of water heaters are made of. In this case steel has a more smooth surface which significantly strengthens the grip of protective coating and prevents the appearance of micro cracks.

Oxygen Free System

The exclusive technology of Bio-glasslined coating in the inert gas conditions.

The durability of the inner tanks coating is the key to long life of water heater. Tiny air bubbles or micropores in the coating can lead to pitting and water heater's failure. Oxygen Free System eliminates air entrapment and ensures the safety of the inner tank for the entire lifetime period.

Ultra Sonic Test

An effective quality control system of protective coating by ultrasonic scanning.

The highest level of quality is not possible without advanced control systems. Therefore, Thermex has developed its own system for ultrasonic testing of the inner tank for detecting even the smallest, invisible to the eye, defects in coating with a 100% guarantee.



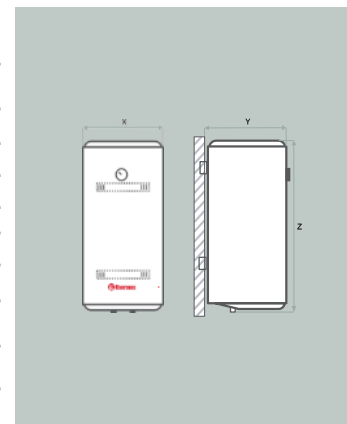
THERMO POWER

Series of the storage water heaters with performance of smart heating element with increased flexibility to save your time



- Bio-glasslined inner tank treatment.
- High powered stainless steel heating element
- 3 power modes for your wellness:
 - slow 1.0 kW,
 - standard 1.5 kW,
 - fast 2.5 kW.
- Excellent energy efficiency with high density CFC free polyurethane thermal insulation.
- Reliable mechanical control.
- Enlarged magnesium anode.
- Steel outer casing.
- Models with slim and standard diameter.
- Power cord included.
- 30 to 150 liters.
- 5 years inner tank warranty.

Models		Slim models		Standard models		
		ES 30 V Thermo	ES 50 V Thermo	ER 80 V Thermo	ER 100 V Thermo	ER 150 V Thermo
Capacity	l	30	50	80	100	150
Rated power (mode 1/mode 2/mode 3)	kW	1.0/1.5 / 2.5	1.0/1.5/2.5	1.0/1.5/2.5	1.0 1.5/2.5	1.0/1.5/2.5
Rated pressure, max	bar.	8	8	8	8	8
Rated voltage / Frequency	V / Hz	230 / 50	230 / 50	230 / 50	230 / 50	230 / 50
Heating time, $\Delta t^\circ=45^\circ\text{C}$	h:min	0:36	1:00	1:36	2:00	3:00
Net weight	kg $\pm 8\%$	13.5	16.8	21.2	24.4	35.4
Mount		vertical	vertical	vertical	vertical	vertical
IP rating		IPX4	IPX4	IPX4	IPX4	IPX4
ERP	load profile	S	M	M	L	XL
ERP, class	class	C	C	C	C	C
Width, mm (X)	mm	365	365	445	445	445
Depth, mm (Y)	mm	378	378	459	459	459
Height, mm (Z)	mm	501	722	751	903	1283



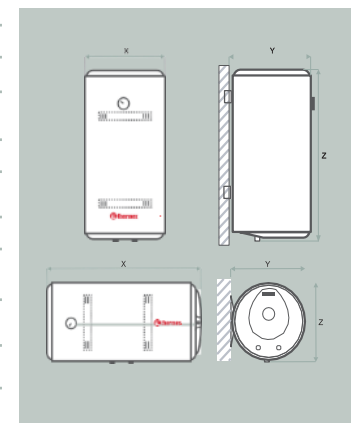
CHAMPION

Legendary classics of water heaters in traditional round shape with bio-glasslined inner tank coating with strong corrosion resistance.



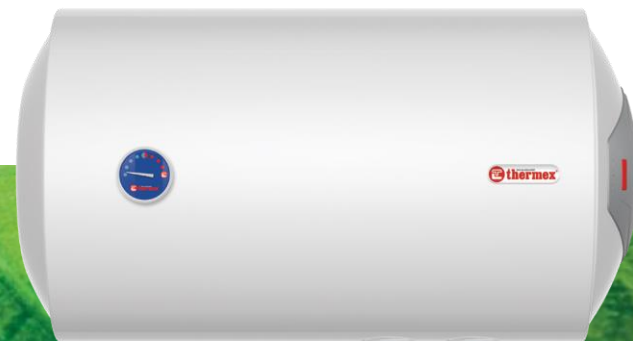
- Bio-glasslined inner tank treatment.
- Excellent energy efficiency with high density CFC free polyurethane thermal insulation.
- Reliable mechanical control.
- Enlarged magnesium anode.
- Steel outer casing.
- Models with slim and standard diameter.
- Power cord included.
- 30 to 150 liters.
- 5 years inner tank warranty.

Models		Slim models				Standard models			
		ES 30 V	ES 50 V	ES 60 V	ES 70 V	ER 50 V	ER 80 V	ER 100 V	ER 150 V
Capacity	l	30	50	60	70	50	80	100	150
Rated power	kW	1.5	1.5	1.5	1.5	1.5	1.5	1.5	1.5
Rated pressure, max	bar.	8	8	8	8	8	8	8	8
Rated voltage / Frequency	V / Hz	230 / 50	230 / 50	230 / 50	230 / 50	230 / 50	230 / 50	230 / 50	230 / 50
Heating time, $\Delta t^\circ=45^\circ\text{C}$	h:min	1:05	1:45	2:10	2:30	1:45	2:50	3:30	4:40
Net weight	kg $\pm 8\%$	13.5	16.9	18.8	21.1	16.7	21.5	24.7	35.8
Mount		vertical	vertical	vertical	vertical	vertical	vertical	vertical	vertical
IP rating		IPX4	IPX4	IPX4	IPX4	IPX4	IPX4	IPX4	IPX4
ERP	load profile	S	M	M	M	M	M	L	XL
ERP	class	C	C	C	C	C	C	C	C
Width, mm (X)	mm	365	365	365	365	445	445	445	445
Depth, mm (Y)	mm	378	378	378	378	459	459	459	459
Height, mm (Z)	mm	507	722	854	971	540	768	920	1300



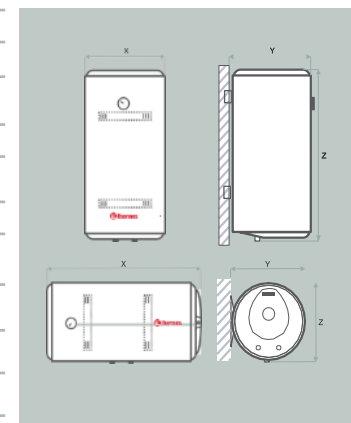
CHAMPION

Classic round shape models for horizontal mounting.



- Horizontal installation models.
- Models with left and right side regulation.
- Bio-glasslined inner tank treatment.
- Excellent energy efficiency with high density CFC free polyurethane thermal insulation.
- Reliable mechanical control.
- Enlarged magnesium anode.
- Steel outer casing.
- Models with slim and standard diameter.
- Power cord included.
- 30 to 150 liters.
- 5 years inner tank warranty.

Models		Slim models				Standard models			
		ES 30 H	ES 50 H	ES 60 H	ES 70 H	ER 50 H	ER 80 H	ER 100 H	ER 150 H
Capacity	l	30	50	60	70	50	80	100	150
Rated power	kW	1.5	1.5	1.5	1.5	1.5	1.5	1.5	1.5
Rated pressure, max	bar.	8	8	8	8	8	8	8	8
Rated voltage / Frequency	V / Hz	230 / 50	230 / 50	230 / 50	230 / 50	230 / 50	230 / 50	230 / 50	230 / 50
Heating time, $\Delta t^\circ=45^\circ\text{C}$	h:min	1:05	1:45	2:10	2:30	1:45	2:50	3:30	4:40
Net weight	kg $\pm 8\%$	13.5	16.9	18.8	21.1	19.4	21.5	24.7	35.8
Mount		horizont.	horizont.	horizont.	horizont.	horizont.	horizont.	horizont.	horizont.
IP rating		IPX4	IPX4	IPX4	IPX4	IPX4	IPX4	IPX4	IPX4
ERP	load profile	S	M	M	M	M	M	L	XL
ERP	class	C	C	C	C	C	C	C	C
Width, mm (X)	mm	507	737	854	971	527	751	903	1283
Depth, mm (Y)	mm	378	378	378	378	459	459	459	459
Height, mm (Z)	mm	365	365	365	365	445	445	445	445



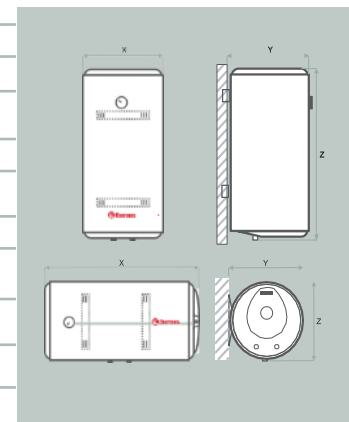
CHAMPION ECO

Storage water heaters from the classic series are intended for hot water supply of single or multiply outlets in any types of households.



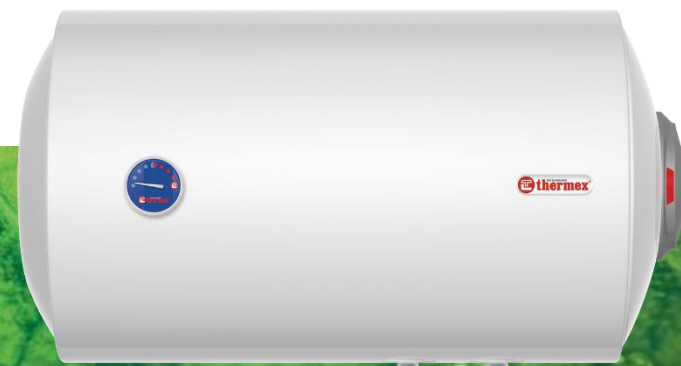
- Bio-glasslined inner tank treatment.
- Excellent energy efficiency with high-density CFC free polyurethane thermal insulation.
- Reliable mechanical control.
- Enlarged magnesium anode.
- Steel outer casing.
- Models with slim and standard diameter.
- 30 to 150 liters.
- 3 years inner tank warranty.
- Power cord not included.

Models		Slim models				Standard models			
		ES 30 V (eco)	ES 50 V (eco)	ES 60 V (eco)	ES 70 V (eco)	ER 50 V (eco)	ER 80 V (eco)	ER 100 V (eco)	ER 150 V (eco)
Capacity	l	30	50	60	70	50	80	100	150
Rated power	kW	1.5	1.5	1.5	1.5	1.5	1.5	1.5	1.5
Rated pressure, max	bar.	8	8	8	8	8	8	8	8
Rated voltage / Frequency	V / Hz	230 / 50	230 / 50	230 / 50	230 / 50	230 / 50	230 / 50	230 / 50	230 / 50
Heating time, $\Delta t^\circ=45^\circ\text{C}$	h:min	1:05	1:45	2:10	2:30	1:45	2:50	3:30	4:40
Net weight	kg $\pm 8\%$	13.5	16.9	18.8	21.1	16.7	21.5	24.7	35.8
Mount		vertical	vertical	vertical	vertical	vertical	vertical	vertical	vertical
IP rating		IPX4	IPX4	IPX4	IPX4	IPX4	IPX4	IPX4	IPX4
ERP	load profile	S	M	M	M	M	M	L	XL
ERP, class	class	C	C	C	C	C	C	C	C
Width, mm (X)	mm	365	365	365	365	445	445	445	445
Depth, mm (Y)	mm	378	378	378	378	459	459	459	459
Height, mm (Z)	mm	507	722	854	971	540	768	920	1300



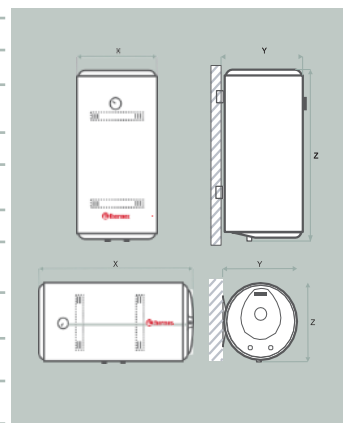
CHAMPION ECO

Horizontal models in the classic round water heaters series.



- Horizontal installation models.
- Models with left and right side regulation.
- Bio-glasslined inner tank treatment.
- Excellent energy efficiency with high-density CFC free polyurethane thermal insulation.
- Reliable mechanical control.
- Enlarged magnesium anode.
- Steel outer casing.
- Models with slim and standard diameter.
- 30 to 150 liters.
- 3 years inner tank warranty.
- Power cord not included.

Models		Slim models				Standard models			
		ES 30 H (eco)	ES 50 H (eco)	ES 60 H (eco)	ES 70 H (eco)	ER 50 H (eco)	ER 80 H (eco)	ER 100 H (eco)	ER 150 H (eco)
Capacity	l	30	50	60	70	50	80	100	150
Rated power	kW	1.5	1.5	1.5	1.5	1.5	1.5	1.5	1.5
Rated pressure, max	bar.	8	8	8	8	8	8	8	8
Rated voltage / Frequency	V / Hz	230 / 50	230 / 50	230 / 50	230 / 50	230 / 50	230 / 50	230 / 50	230 / 50
Heating time, $\Delta t^\circ=45^\circ\text{C}$	h:min	1:05	1:45	2:10	2:30	1:45	2:50	3:30	4:40
Net weight	kg $\pm 8\%$	13.5	16.9	18.8	21.1	19.4	21.5	24.7	35.8
Mount		horizont.	horizont.	horizont.	horizont.	horizont.	horizont.	horizont.	horizont.
IP rating		IPX4	IPX4	IPX4	IPX4	IPX4	IPX4	IPX4	IPX4
ERP	load profile	S	M	M	M	M	M	L	XL
ERP	class	C	C	C	C	C	C	C	C
Width, mm (X)	mm	507	737	854	971	527	751	903	1283
Depth, mm (Y)	mm	378	378	378	378	459	459	459	459
Height, mm (Z)	mm	365	365	365	365	445	445	445	445



SUPERDRY

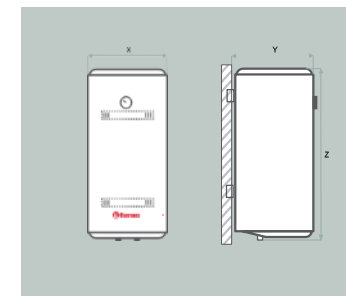
Series with DRY stick heating element have been created for long-life and reliable work in areas supplied with highly mineralized or aggressive water.



- Two dry tube heating elements does not go into a direct contact with water
- Long life heating element with low surface temperature
- Easy maintenance - no need to drain the water if the dry heater need a replacement
- Precise capillary control thermostat
- Excellent energy efficiency with high density CFC free polyurethane thermal insulation
- 5 years inner tank warranty.

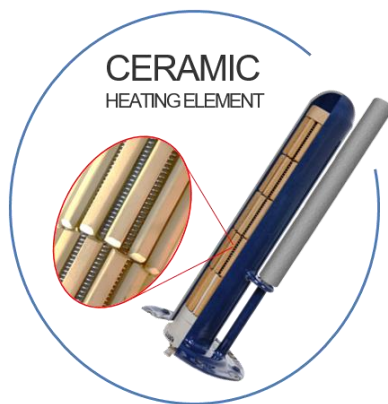


Models		Slim models			Standard models		
		ERD 30 V slim	ERD 50 V slim	ERD 80 V slim	ERD 50 V	ERD 80 V	ER 100 V
Capacity	l	30	50	80	50	80	100
Rated power	kW	2.0	2.0	2.0	2.0	2.0	2.0
Rated pressure, max	bar.	8	8	8	8	8	8
Rated voltage / Frequency	V / Hz	230 / 50	230 / 50	230 / 50	230 / 50	230 / 50	230 / 50
Heating time, $\Delta t^\circ=45^\circ\text{C}$	h:min	1:08	1:26	2:03	1:17	2:03	2:34
Net weight	kg $\pm 8\%$	13.9	17.2	24.3	16.9	21.6	24.8
Mount		vertical	vertical	vertical	vertical	vertical	vertical
IP rating		IPX4	IPX4	IPX4	IPX4	IPX4	IPX4
ERP	load profile	S	M	M	M	M	L
Width, mm (X)	mm	365	365	365	445	445	445
Depth, mm (Y)	mm	378	378	378	459	459	459
Height, mm (Z)	mm	501	722	1072	527	751	903



CERAMIC

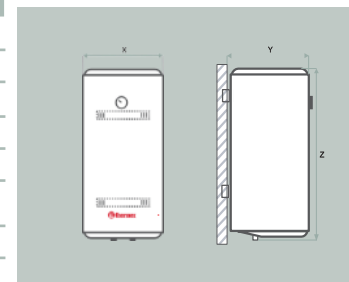
Series equipped with ceramic heating element provides full comfort and durable long-term operation with all types of water.



- Dry Ceramic heating element
- steel sleeve covered by Bio-glasslined coating
- long lifetime in hard and aggressive water conditions
- easy maintenance – replacement of heating element without water draining
- high density CFC free polyurethane thermal insulation
- Precise capillary control thermostat
- Power cord included.
- 5 years inner tank warranty.



Models		Slim models			Standard models		
		ERD (pro) 30 V Slim	ERD (pro) 50 V Slim	ERD (pro) 80 V Slim	ERD (pro) 50 V	ERD (pro) 80 V	ERD (pro) 100 V
Capacity	l	30	50	80	50	80	100
Rated power	kW	1,8	1,8	1,8	1,8	1,8	1,8
Rated pressure, max	bar.	8	8	8	8	8	8
Rated voltage / Frequency	V / Hz	230 / 50	230 / 50	230 / 50	230 / 50	230 / 50	230 / 50
Heating time, $\Delta t^\circ=45^\circ\text{C}$	h:min	1:23	1:46	2:31	1:35	2:31	3:10
Net weight	kg $\pm 8\%$	14,2	17,5	24,6	17,2	21,9	25,1
Mount		vertical	vertical	vertical	vertical	vertical	vertical
IP rating		IPX4	IPX4	IPX4	IPX4	IPX4	IPX4
ERP	load profile	S	M	M	M	M	L
Width, mm (X)	mm	365	365	365	445	445	445
Depth, mm (Y)	mm	378	378	378	459	459	459
Height, mm (Z)	mm	501	722	1072	527	751	903



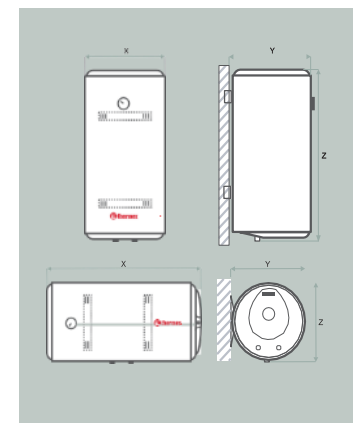
UNIVERSAL

Universal series can be mounted in vertical or horizontal position for perfectly integration in any place.



- Multi-position installation –can be installed in vertical or horizontal positions
- Bio-glasslined inner tank treatment.
- Excellent energy efficiency with high density CFC free polyurethane thermal insulation.
- Reliable mechanical control.
- Enlarged magnesium anode.
- Steel outer casing.
- Power cord included.
- 5 years inner tank warranty.

Models		Standard models			
		UNI 50 V	UNI 80 V	UNI 100 V	UNI 150 V
Capacity	l	50	80	100	150
Rated power	kW	1,5	1,5	1,5	1,5
Rated pressure, max	bar.	8	8	8	8
Rated voltage / Frequency	V / Hz	230/50	230/50	230/50	230/50
Heating time, $\Delta t^\circ=45^\circ\text{C}$	h:min	1:35	2:31	3:10	4:40
Net weight	kg $\pm 8\%$	16.5	21.2	24.4	35.4
Mount		vertical/ horizontal	vertical/ horizontal	vertical/ horizontal	vertical/ horizontal
IP rating		IPX4	IPX4	IPX4	IPX4
ERP	load profile	M	M	L	L
Width, mm (X)	mm	445	445	445	445
Depth, mm (Y)	mm	459	459	459	459
Height, mm (Z)	mm	527	751	903	1283



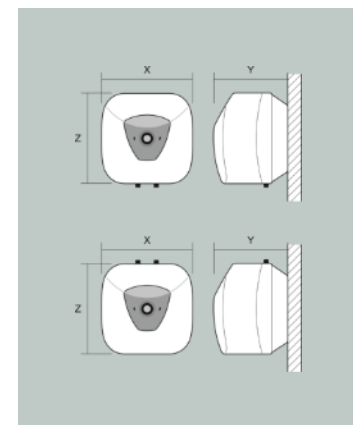
HIT

Series of compact storage water heaters are suitable for places where you need for a small quantity of hot water, such as kitchens, workshops and small food and service firms restrooms.



- Bio-glasslined inner tank treatment.
- Under and over sink mounting option.
- Excellent energy efficiency with high-density CFC free polyurethane thermal insulation.
- Reliable mechanical control.
- Enlarged magnesium anode.
- Power cord with euro plug included.
- 5 years inner tank warranty.

Models		H 10 O	H 10 U	H 15 O	H 15 U	H 30 O	H 30 U
Capacity	l	10	10	15	15	30	30
Rated power	kW	1.5	1.5	1.5	1.5	1.5	1.5
Rated pressure, max	bar.	8	8	8	8	8	8
Rated voltage / Frequency	V / Hz	230 / 50	230 / 50	230 / 50	230 / 50	230 / 50	230 / 50
Heating time, $\Delta t^\circ=45^\circ\text{C}$	h:min	0:21	0:21	0:31	0:31	1:00	1:00
Net weight	kg $\pm 8\%$	7.5	7.5	8.5	8.5	12.5	12.5
Mount		over	under	over	under	over	under
IP rating		IPX4	IPX4	IPX4	IPX4	IPX4	IPX4
ERP	load profile	XXS	XXS	XXS	XXS	S	S
ERP, class	class	B	C	B	C	C	C
Width, mm (X)	mm	345	345	385	385	455	455
Depth, mm (Y)	mm	303	303	335	335	408	408
Height, mm (Z)	mm	366	366	406	406	476	476



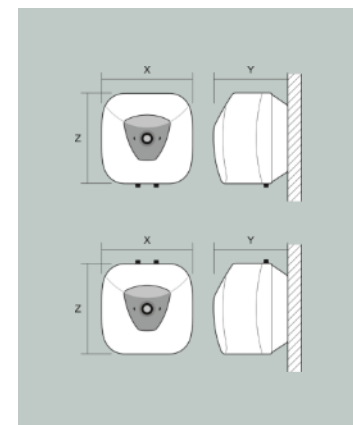
HIT ECO

Series of compact storage water heaters are suitable for places where you need for a small quantity of hot water, such as kitchens, workshops and small food and service firms restrooms.



- Bio-glasslined inner tank treatment.
- Under and over sink mounting option.
- Excellent energy efficiency with high-density CFC free polyurethane thermal insulation.
- Reliable mechanical control.
- Enlarged magnesium anode.
- Power cord not included.
- 3 years inner tank warranty.

Models		H 10 O (eco)	H 10 U (eco)	H 15 O (eco)	H 15 U (eco)	H 30 O (eco)	H 30 U (eco)
Capacity	l	10	10	15	15	30	30
Rated power	kW	1.5	1.5	1.5	1.5	1.5	1.5
Rated pressure, max	bar.	8	8	8	8	8	8
Rated voltage / Frequency	V / Hz	230 / 50	230 / 50	230 / 50	230 / 50	230 / 50	230 / 50
Heating time, $\Delta t^\circ = 45^\circ\text{C}$	h:min	0:21	0:21	0:31	0:31	1:00	1:00
Net weight	kg $\pm 8\%$	7.5	7.5	8.5	8.5	12.5	12.5
Mount		over	under	over	under	over	under
IP rating		IPX4	IPX4	IPX4	IPX4	IPX4	IPX4
ERP	load profile	XXS	XXS	XXS	XXS	S	S
ERP, class	class	B	C	B	C	C	C
Width, mm (X)	mm	345	345	385	385	455	455
Depth, mm (Y)	mm	303	303	335	335	408	408
Height, mm (Z)	mm	366	366	406	406	476	476

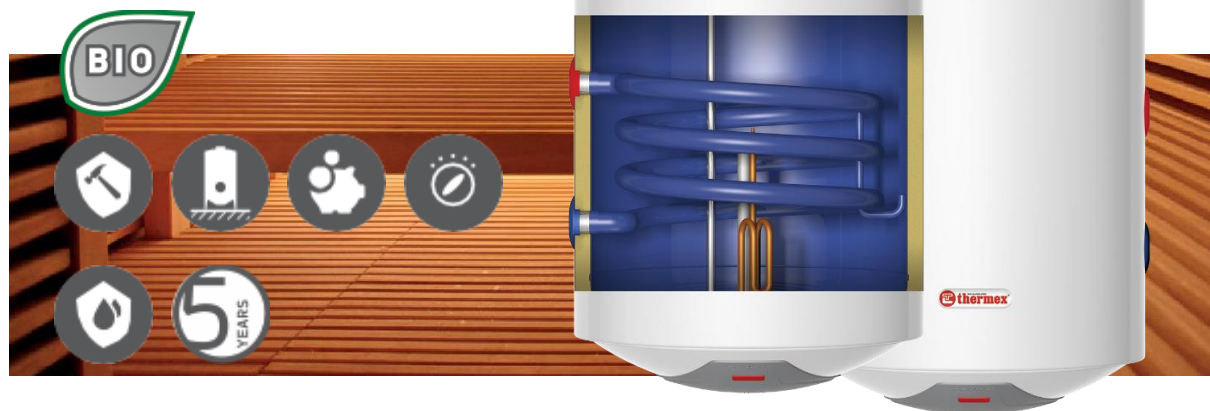


COMBI

Professional Line

Combined storage water heaters with an integrated high performance serpentine heat exchanger and electric heating element.

Highly efficient solution for using the alternative sources of heating energy.



MAXIMUM INTEGRATION

Combined water heaters constructed to become a part of any modern heating system and multiply it's efficiency by integration with:

- Central heating systems;
- Gas and fuel boilers;
- Heat pumps;
- Solar collectors;

... and other popular types of domestic heating sources.

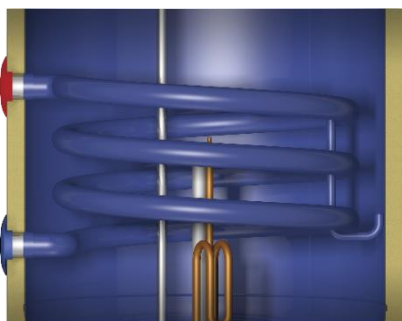
MAXIMUM EFFICIENCY

The internal heating element controlled by a double safety thermostat and temperature setting knob, through the coil may work combined with the external heating system, having so a double heating source for maximum performance of hot water. Switched heating element "off" letting the water being heated by the external source via the coil; with the element "on" and the external heating system "off" it helps saving energy in the summer months.

MAXIMUM RELIABILITY

COMBI series are also made in accordance with «Made to last» concept to provide optimum reliability even when working with more severe conditions than a conventional water heaters. Inner tank and heat exchanger are covered by Bio-glasslined coating with highest grade of anti-corrosion protection. Long life of COMBI heaters provided by using high level quality raw materials and spare parts with multi-stage quality control on production lines.

Bio-glasslined inner tank and heat exchanger protection.



Models with right or left side connections for the best co-working with wall-mounted boilers.



Additional thermostat's connection port (optional).



- High effective steel coil heat exchanger with Bio-glasslined coating.
- Electric units consist of heating element, magnesium anode and double safety thermostat.
- Excellent energy efficiency with high- density CFC free polyurethane thermal insulation.
- Models with right or left side coils connection.
- Steel outer casing with external thermometer.
- Reliable mechanical control.
- Compact size for wall mount installation.
- Additional thermostat's connection port available as option.
- 5 years inner tank warranty.

Models		ER 80 V (combi)	ER 100 V (combi)	ER 150 V (combi)
Capacity	l	80	100	150
Rated power (heating element)	kW	1.5	1.5	1.5
Heat exchanger area	m ²	0.22	0.22	0.22
Heating power	kW	6.5	6.5	6.5
Rated pressure, max	bar.	8	8	8
Rated voltage / Frequency	V / Hz	230 / 50	230 / 50	230 / 50
Heating time, $\Delta t^{\circ}=45^{\circ}\text{C}$	h:min	2:50	3:30	4:40
Net weight	kg $\pm 8\%$	25.9	29.1	40.1
Mount		vertical	vertical	vertical
IP rating		IPX4	IPX4	IPX4
ERP	load profile	M	L	XL
ERP, class	class	C	C	C
Width, mm (X)	mm	445	445	445
Depth, mm (Y)	mm	459	459	459
Height, mm (Z)	mm	803	963	1163



CHAMPION FLOOR

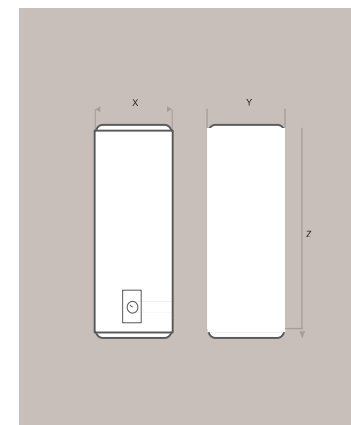
Commercial Line

Floor standing water heaters with big capacity and high performance of hot water output, created to supply large environment



- Floor standing models with 200 and 300 liters capacity.
- Bio-glasslined inner tank treatment.
- Excellent energy efficiency with high- density CFC free polyurethane thermal insulation.
- 3 power modes: 1, 2 and 3 kW.
- Control panel on the front side of water heater.
- Enlarged magnesium anode.
- Steel outer casing.
- Ready for industrial usage.
- 3 or 5 years inner tank warranty.

Models		ER 200 V	ER 300 V
Capacity	l	200	300
Rated power (mode 1/mode 2/mode 3)	kW	1.0/2.0/3.0	1.0/2.0/3.0
Rated pressure, max	bar.	8	8
Rated voltage / Frequency	V / Hz	230 / 50	230 / 50
Heating time, $\Delta t^{\circ}=45^{\circ}\text{C}$	h:min	3:30	5:15
Net weight	kg $\pm 8\%$	56.7	73.8
Mount		floor standing	floor standing
IP rating		IPX4	IPX4
ERP	load profile	XXL	XXL
ERP, class	Class	C	C
Width, mm (X)	mm	560	560
Depth, mm (Y)	mm	672	672
Height, mm (Z)	mm	1216	1705



INOX TECHNOLOGIES

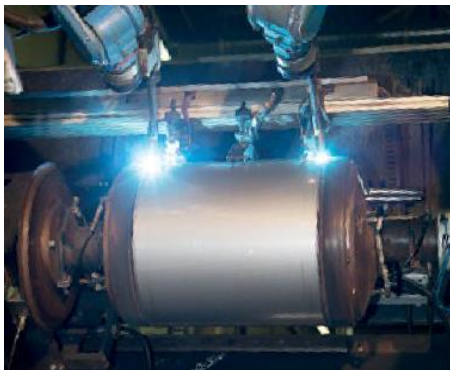


STAINLESS STEEL

With over 60 years of experience in the production of heating equipment, Thermex does not use the existing solutions, but implements the unique technologies in production that provides high reliability and durability of the stainless steel inner tanks of water heaters.

G.5 Complex

G.5 Stainless Steel Highest Standard is a complex of unique technologies of the latest generation, created to provide integrity structure of Thermex stainless steel inner tanks and corrosion protection.



ASTN+

Special non-corrosive stainless steel of inner tanks Thermex. Unlike ferritic steel, the high-alloyed (austenitic) steel ASTN+ doesn't rust even at high pressure and frequent temperature changes which are the normal conditions of the water heater's work.

C.M.T.

Cold Metal Transfer is a modern technology of cold welding, creating the most reliable seam welds.

The temperature of cold welding 2.5 times lower than the common welding, that's why alloying additives are not burned. The lattice of the welded metal retains sustainable structure that allows to make the weld joints which are no corrosion.

TIG-tronic

The complex of automatic robotic welding excludes the possibility of inhomogeneous welds and metal overheating. Thanks to the fine calibration of high-precision robots, the perfect duplication of the welds is achieved for its absolute strength.

GS-Duo

Double feeding of the protective gas in the welding area almost completely displaces the oxygen, creating an area close to technical vacuum. The welding process becomes absolutely stable, and the weld is twice corrosion resistant.

*All is for one purpose –
long years of excellent work!*

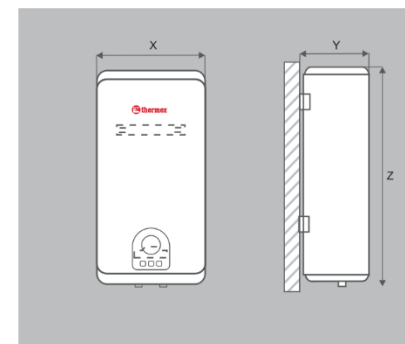
FLAT PRO

Stainless steel series with flat shape is perfect to integrate in modern home design and takes up less space to install in every place, even small rooms and bathrooms.



- Flat shape with double tank technology allows space saving
- Inner tank made of austenitic stainless steel
- 3 power modes for fast, regular and eco heating
- Energy saving and high efficiency
- High density thermal insulation
- Digital control panel
- 7 years inner tank warranty.

Models		IF 30 V	IF 50 V	IF 80 V	IF 100 V
Capacity	l	25	43	70	85
Rated power	kW	0.7/1.3/2.0	0.7/1.3/2.0	0.7/1.3/2.0	0.7/1.3/2.0
Rated pressure, max	bar.	7	7	7	7
Rated voltage / Frequency	V / Hz	230/50	230/50	230/50	230/50
Heating time, $\Delta t^\circ=45^\circ\text{C}$	h:min	0:40	1:07	1:47	2:14
Net weight	kg $\pm 8\%$	9.5	12.5	17	18.5
Mount		vertical	vertical	vertical	vertical
IP rating		IPX4	IPX4	IPX4	IPX4
ERP	load profile	S	M	M	M
ERP	class	C	C	C	C
Width, mm (X)	mm	453	453	511	511
Depth, mm (Y)	mm	263	263	293	293
Height, mm (Z)	mm	587	880	1018	1240



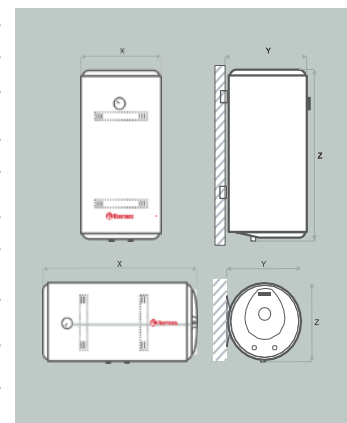
ETERNA

Highly reliable storage water heaters with stainless steel inner tank in traditional round wall-mounting form factor.



- Inner tank made of austenitic stainless steel.
- Excellent energy efficiency with high-density CFC free polyurethane thermal insulation.
- Steel outer casing.
- Reliable mechanical control.
- Capillary thermostat.
- Protection anode for prevent of corrosion.
- 7 years inner tank warranty.

Models		Slim models				Standard models			
		IS 30 V	IS 50 V	IS 60 V	IS 70 V	IR 50 V	IR 80 V	IR 100 V	IR 150 V
Capacity	l	30	50	60	70	50	80	100	150
Rated power	kW	1.5	1.5	1.5	1.5	1.5	1.5	1.5	1.5
Rated pressure, max	bar.	8	8	8	8	8	8	8	8
Rated voltage / Frequency	V / Hz	230 / 50	230 / 50	230 / 50	230 / 50	230 / 50	230 / 50	230 / 50	230 / 50
Heating time, $\Delta t^{\circ}=45^{\circ}\text{C}$	h:min	1:05	1:45	2:10	2:30	1:45	2:50	3:30	4:40
Net weight	kg $\pm 8\%$	10.2	13.4	18.5	21.2	13.2	16.8	19.6	24.6
Mount		vertical	vertical	vertical	vertical	vertical	vertical	vertical	vertical
IP rating		IPX4	IPX4	IPX4	IPX4	IPX4	IPX4	IPX4	IPX4
ERP	load profile	S	M	M	M	M	M	L	XL
ERP, class	class	C	C	C	C	C	C	C	C
Width, mm (X)	mm	365	365	365	365	445	445	445	445
Depth, mm (Y)	mm	378	378	378	378	459	459	459	459
Height, mm (Z)	mm	501	722	839	956	527	751	903	1283



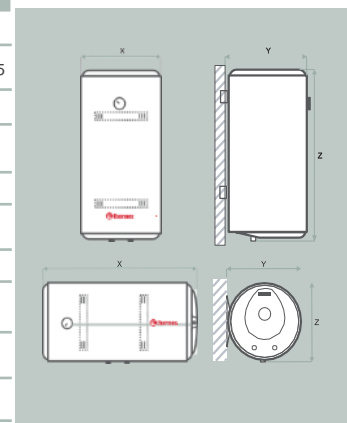
PRAKTIK

Practical series of water heaters with stainless steel inner tank and high power heating element.



- Inner tank made of austenitic stainless steel.
- Excellent energy efficiency with high-density CFC free polyurethane thermal insulation.
- 3 power modes for your wellness:
 - slow 1.0 kW,
 - standard 1.5 kW,
 - fast 2.5 kW.
- Steel outer casing.
- Reliable mechanical control.
- Capillary thermostat.
- Protection anode for prevent of corrosion.
- 7 years inner tank warranty.

Models		Slim models			Standard models			
		IS 30 V (pro)	IS 50 V (pro)	IS 60 V (pro)	IR 50 V (pro)	IR 80 V (pro)	IR 100 V (pro)	IR 150 V (pro)
Capacity	l	30	50	60	50	80	100	150
Rated power (mode 1/mode 2/mode 3)	kW	1.0 / 1.5 / 2.5	1.0 / 1.5 / 2.5	1.0 / 1.5 / 2.5	1.0 / 1.5 / 2.5	1.0 / 1.5 / 2.5	1.0 / 1.5 / 2.5	1.0 / 1.5 / 2.5
Rated pressure, max	bar.	8	8	8	8	8	8	8
Rated voltage / Frequency	V / Hz	230 / 50	230 / 50	230 / 50	230 / 50	230 / 50	230 / 50	230 / 50
Heating time, $\Delta t^\circ=45^\circ\text{C}$	h:min	0:36	1:00	1:10	1:00	1:36	2:00	3:00
Net weight	kg $\pm 8\%$	13.5	16.9	19.8	19.4	21.2	24.4	35.4
Mount		vertical	vertical	vertical	vertical	vertical	vertical	vertical
IP rating		IPX4	IPX4	IPX4	IPX4	IPX4	IPX4	IPX4
ERP	load profile	S	M	M	M	M	L	XL
ERP, class	class	C	C	C	C	C	C	C
Width, mm (X)	mm	365	365	365	445	445	445	445
Depth, mm (Y)	mm	378	378	378	459	459	459	459
Height, mm (Z)	mm	501	722	839	527	751	903	1283

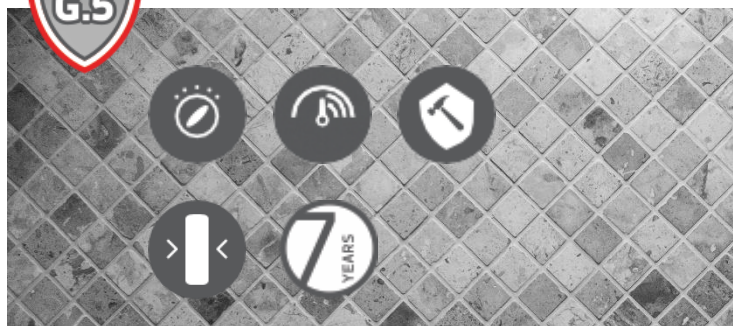


ULTRASLIM

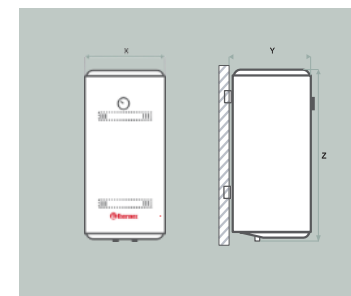
The slimmest model in the range!

Stainless steel series with space saving ultra-slim diameter for easy installation in the limited places.

- Ultra slim diameter – only 27 cm.
- Inner tank made of austenitic stainless steel.
- 3 power modes for your wellness:
 - slow 0.7 kW,
 - standard 1.3 kW,
 - fast 2.0 kW.
- Steel outer casing.
- Reliable mechanical control.
- 7 years inner tank warranty.



Models		IU 30	IU 50
Capacity	l	30	50
Rated power (mode 1/mode 2/mode 3)	kW	0.7 / 1.3/ 2.0	0.7 / 1.3/ 2.0
Rated pressure, max	bar.	8	8
Rated voltage / Frequency	V / Hz	230 / 50	230 / 50
Heating time, $\Delta t^\circ=45^\circ\text{C}$	h:min	0:50	1:20
Net weight	kg $\pm 8\%$	10.6	15.3
Mount		vertical	Vertical
IP rating		IPX4	IPX4
ERP	load profile	M	M
ERP, class	class	C	C
Width, mm (X)	mm	270	270
Depth, mm (Y)	mm	285	285
Height, mm (Z)	mm	800	1285



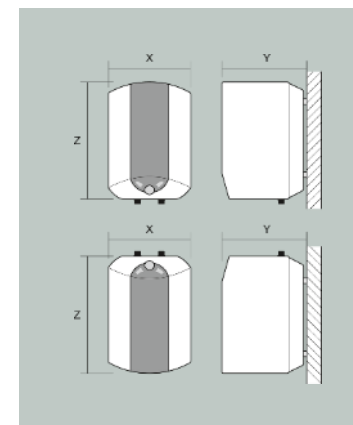
BLITZ TURBO

Series of compact and powerful storage water heaters with stainless steel inner tank and extremely fast heating time.



- Compact models with 10 and 15 liters capacity
- Inner tank made of austenitic stainless steel
- High power and 2 heating modes: 1.5 and 2.5 kW
- Fastest heating time – hot water in 12 min.
- Under and over sink mounting models.
- Protection anode for prevent of corrosion.
- Control regulator with protection system that prevent of random changing temperature.
- Power cord with euro plug included.
- 7 years inner tank warranty.

Models		IBL 10 O	IBL 10 U	IBL 15 O	IBL 15 U
Capacity	l	10	10	15	15
Rated power (mode 1/mode 2)	kW	1.5/ 2.5	1.5/ 2.5	1.5/ 2.5	1.5/ 2.5
Rated pressure, max	bar.	8	8	8	8
Rated voltage / Frequency	V / Hz	230 / 50	230 / 50	230 / 50	230 / 50
Heating time, $\Delta t^\circ=45^\circ\text{C}$	h:min	0:12	0:12	0:18	0:18
Net weight	kg $\pm 8\%$	7.15	7.15	8.1	8.1
Mount		over	under	over	under
IP rating		IPX4	IPX4	IPX4	IPX4
ERP	load profile	XXS	XXS	XXS	XXS
ERP, class	class	B	B	B	B
Width, mm (X)	mm	290	290	315	315
Depth, mm (Y)	mm	295	295	320	320
Height, mm (Z)	mm	420	420	455	455



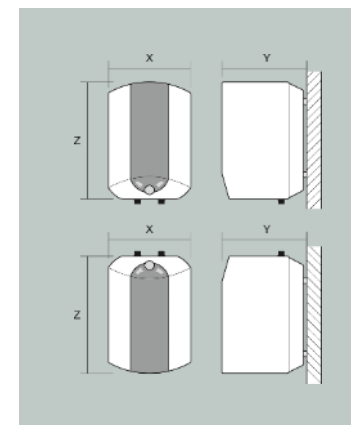
BLITZ

Series of compact storage water heaters with stainless steel inner tank equipped with heating element of standard power rate.



- Compact models with 10 and 15 liters capacity
- Inner tank made of austenitic stainless steel
- High power and 2 heating modes: 1.5 and 2.5 kW
- Fastest heating time – hot water in 8 min.
- Under and over sink mounting models.
- Protection anode for prevent of corrosion.
- Control regulator with protection system that prevent of random changing temperature.
- 3 years inner tank warranty.
- Power cord not included.

Models		IBL 10 O (eco)	IBL 10 U (eco)	IBL 15 O (eco)	IBL 15 U (eco)
Capacity	l	10	10	15	15
Rated power	kW	1.5	1.5	1.5	1.5
Rated pressure, max	bar.	8	8	8	8
Rated voltage / Frequency	V / Hz	230 / 50	230 / 50	230 / 50	230 / 50
Heating time, $\Delta t^\circ=45^\circ\text{C}$	h:min	0:14	0:14	0:23	0:23
Net weight	kg $\pm 8\%$	7.15	7.15	8.1	8.1
Mount		over	under	Over	under
IP rating		IPX4	IPX4	IPX4	IPX4
ERP	load profile	XXS	XXS	XXS	XXS
ERP, class	class	B	C	B	C
Width, mm (X)	mm	290	290	315	315
Depth, mm (Y)	mm	295	295	320	320
Height, mm (Z)	mm	420	420	455	455



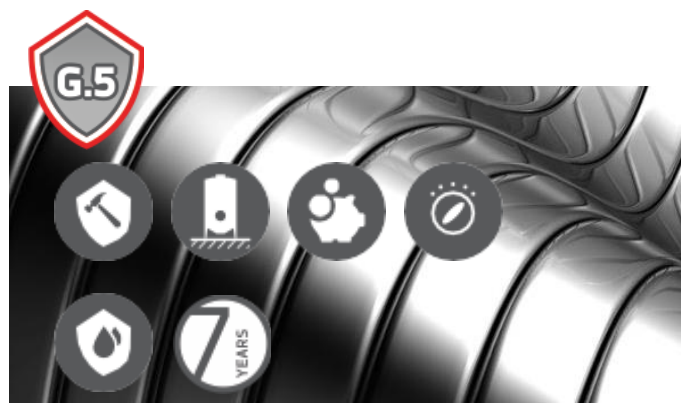
COMBI INOX

Professional Line

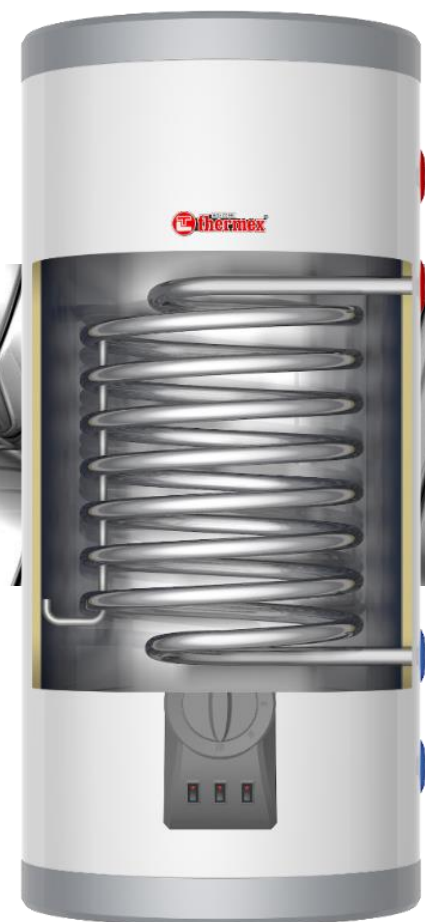
New range of large-capacity stainless steel combined water heaters for domestic or industrial use.

High efficiency and widely applying to central heating system, gas boilers, heat pumps, solar systems, ect.

- Floor standing models with steel outer casing
- Inner tank and heat exchanger made of austenitic stainless steel
- Stainless steel heat exchanger up to 8 coils (18 kW)
- Electric units with heating element 3 or 6 kW
- 2 Enlarged protection anodes.
- Additional thermostat connection port available as option
- 7 years inner tank warranty.



Models		COMBI Inox 200 V	COMBI Inox 300 V
Capacity	l	200	300
Rated power (heating element)	kW	6.0	6.0
Heat exchanger area	m ²	0.72	0.72
Heating power	kW	18	18
Rated pressure, max	bar.	8	8
Rated voltage / Frequency	V / Hz	230 / 50	230 / 50
Heating time, $\Delta t^{\circ}=45^{\circ}\text{C}$	h:min	1:40	2:20
Net weight	kg $\pm 8\%$	54,4	67,7
Mount		vertical	vertical
IP rating		IPX4	IPX4
ERP	load profile	XXL	3XL
Width, mm (X)	mm	580	580
Depth, mm (Y)	mm	672	672
Height, mm (Z)	mm	1215	1705



THERMEX SERVICE

Only the best service are suitable for the best quality water heaters.

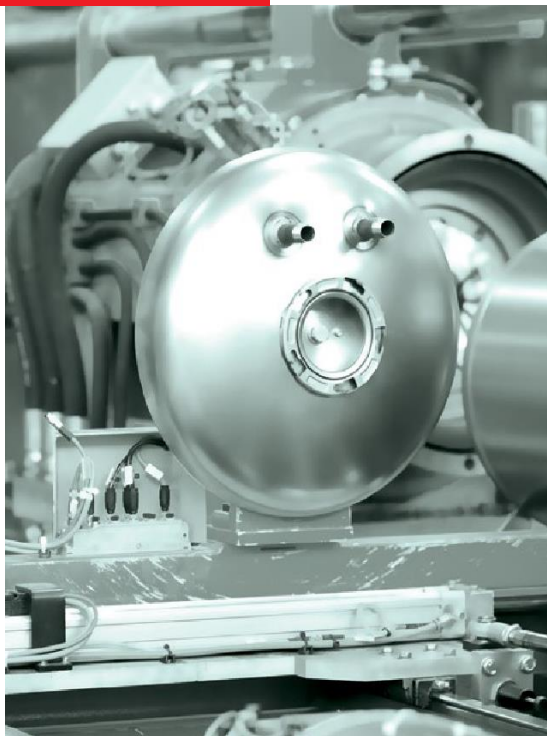


Global Thermex's service policy is organized to offer highest level of service programs for all customers wherever they are. Worldwide network of authorized service partners have been designed to provide a quick and competent support in each region, Thermex has a point of presence.

- More over 600 official service centers;
- Highly trained engineers and technicians;
- Professional stuff quickly reached by call;
- Always available original spare parts and accessories;
- Excellent warranty and after-sales services.



Find the nearest authorized service center at www.thermex.com



CONTACTS:

Thermex corporation
Blagodatnaya st., 63,
Saint-Petersburg,
196105, Russia

Tel. +7 (812) 346-57-77

Fax: +7 (812) 387-15-22

export@thermex.com

WWW.THERMEX.COM

Pictures and technical data
may have differences from
actual devices on sale.
Thermex keep the right to
change the specifications
without notice.